

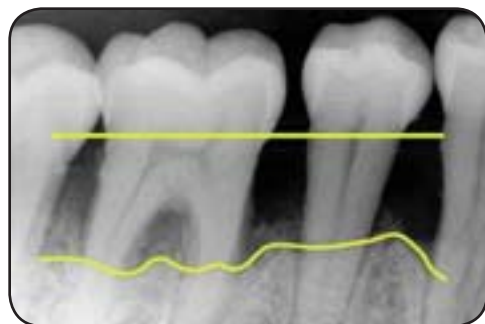
# Digital Full Series X-rays

A full series of x-rays is the first step in a thorough dental examination because it gives us a full view of your mouth.

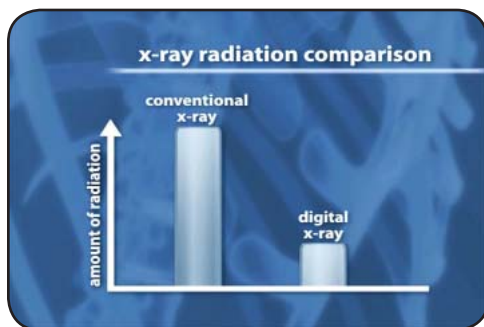
A full series is important because the x-rays give us vital information that we cannot get from any other source.



Digital x-ray sensor



Digital x-ray showing receding bone



X-ray safety



Digital x-ray

## Benefits of a full series of x-rays

We use a full series of x-rays to find a variety of oral conditions throughout your mouth, including:

- ❖ Cavities between the teeth
- ❖ Tartar on the tooth roots
- ❖ Worn-out or broken fillings or crowns
- ❖ Receding bone levels resulting from periodontal disease
- ❖ Abscesses

## Procedure for taking a full series of digital x-rays

First, we cover you with a lead apron to protect your body while we take x-rays of your mouth. Then we place the x-ray sensor inside your mouth so that it lines up properly to get x-ray images of your teeth.

We repeat this process by moving the sensor to 18 or 19 specific locations to thoroughly evaluate your entire mouth.

## Safety of a full series of digital x-rays

Digital x-ray sensors are quite sensitive, so the amount of radiation exposure is very low. In fact, compared to conventional x-rays, digital x-ray systems can reduce the amount of radiation up to 80 percent.